

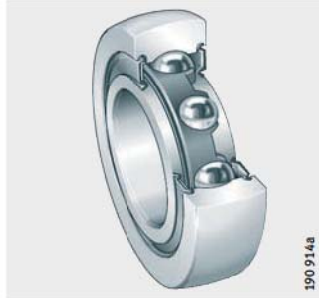
Ball bearing track rollers

Product overview **Ball bearing track rollers**

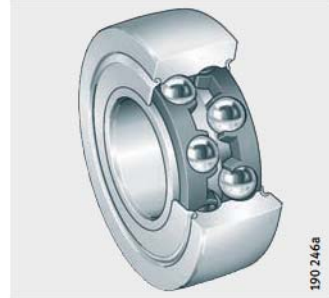
Yoke type track rollers

Single row and double row
Lip seals or
sealing shields

LR6, LR60, LR2



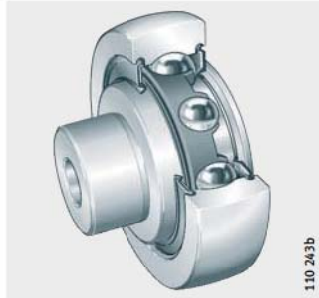
LR50, LR52, LR53



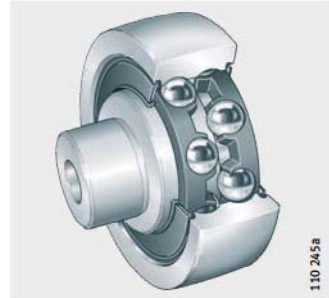
Stud type track rollers

Single row and double row
Lip seals or
sealing shield and cover

ZL2...-DRS

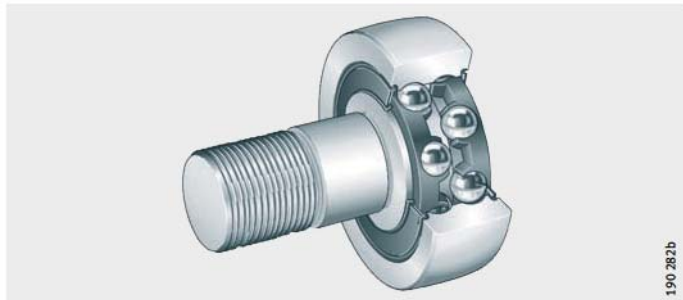


ZL52...-DRS



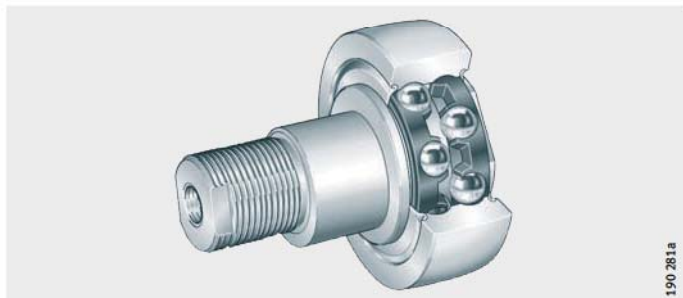
Lip seals

KR52...-2RS



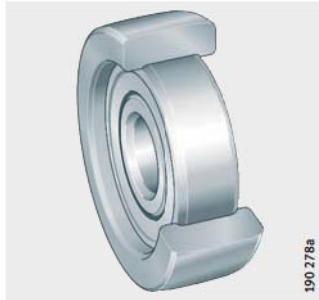
With eccentric collar
Sealing shields

ZLE52...-2Z

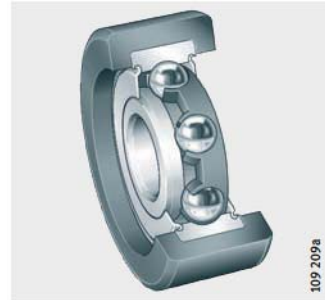


Track rollers with plastic outer tyre
Cylindrical or crowned outside surface
Lip seals or sealing shields

KLRU

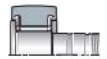
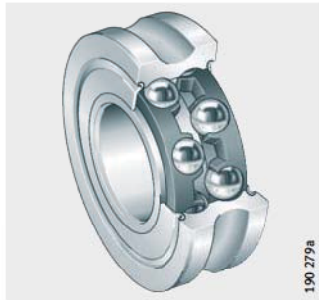


KLRZ



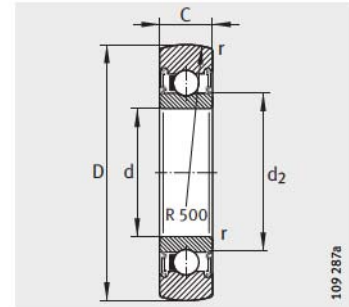
Other products
Track rollers with profiled outer ring

LFR5



Yoke type track rollers

Single row
Sealed



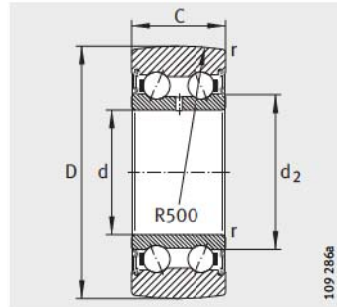
LR6...-2RSR, LR2...-2RSR,
LR2...-X-2RSR¹⁾

Dimension table · Dimensions in mm										
Designation	Mass m ≈g	Dimensions					Basic load ratings		Fatigue limit load C _{urw} N	Speed n _{DG} min ⁻¹
		D	d	C	d ₂	r min.	dyn. C _{r w} N	stat. C _{o r w} N		
LR604-2RSR	10	13	4	4	6,1	0,2	870	350	18,1	24 000
LR605-2RSR	10	16	5	5	7,5	0,2	1 220	510	25,5	23 000
LR606-2RSR	10	19	6	6	8,7	0,3	1 840	790	39,5	22 000
LR607-2RSR	10	22	7	6	9	0,3	2 120	880	42,5	20 000
LR608-2RSR	20	24	8	7	10	0,3	2 750	1 240	63	19 000
LR6000-2RSR	20	28	10	8	14,6	0,3	4 550	2 500	128	16 000
LR6001-2RSR	30	30	12	8	16,6	0,3	4 750	2 800	144	15 000
LR200-2RS	50	32	10	9	16,6	0,6	4 850	2 310	117	13 000
LR200-X-2RS ¹⁾	50	32	10	9	16,6	0,6	4 850	2 310	117	13 000
LR201-2RSR	50	35	12	10	18,3	0,6	5 600	2 750	137	12 000
LR201-X-2RSR ¹⁾	50	35	12	10	18,3	0,6	5 600	2 750	137	12 000
LR202-2RSR	70	40	15	11	21	0,6	6 600	3 350	170	11 000
LR202-X-2RSR ¹⁾	70	40	15	11	21	0,6	6 600	3 350	170	11 000
LR203-2RSR	110	47	17	12	24	0,6	8 500	4 450	223	9 000
LR203-X-2RSR ¹⁾	110	47	17	12	24	0,6	8 500	4 450	223	9 000
LR204-2RSR	150	52	20	14	29	1	10 600	5 700	295	8 000
LR204-X-2RSR ¹⁾	150	52	20	14	29	1	10 600	5 700	295	8 000
LR205-2RSR	230	62	25	15	33,5	1	12 500	7 100	360	7 000
LR205-X-2RSR ¹⁾	230	62	25	15	33,5	1	12 500	7 100	360	7 000
LR206-2RS	330	72	30	16	37,4	1	16 600	9 700	500	5 500
LR206-X-2RS ¹⁾	330	72	30	16	37,4	1	16 600	9 700	500	5 500
LR207-2RS	400	80	35	17	42,4	1,1	20 400	12 100	640	4 500
LR207-X-2RS ¹⁾	400	80	35	17	42,4	1,1	20 400	12 100	640	4 500
LR209-2RS	500	90	45	19	53,2	1,1	22 400	13 700	730	3 600
LR209-X-2RS ¹⁾	500	90	45	19	53,2	1,1	22 400	13 700	730	3 600

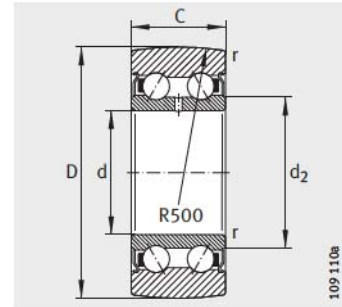
¹⁾ Track roller with cylindrical outside surface.

Yoke type track rollers

Double row
Sealed



LR50..-2RSR



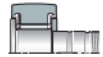
LR52..-2Z,
LR52..-X-2Z¹⁾

Dimension table · Dimensions in mm

Designation	Mass m ≈g	Dimensions					Basic load ratings		Fatigue limit load C _{urw} N	Speed n _{DG} min ⁻¹
		D	d	C	d ₂	r	dyn. C _{rw} N	stat. C _{orw} N		
LR50/5-2RSR	10	17	5	7	8,2	0,2	1 690	940	48,5	12 000
LR50/6-2RSR	20	19	6	9	9,3	0,3	2 700	1 370	66	11 000
LR50/7-2RSR	20	22	7	10	10,5	0,3	3 300	1 700	81	10 000
LR50/8-2RSR ²⁾	30	24	8	11	10,5	0,3	4 300	2 390	119	10 000
LR5000-2RS	30	28	10	12	13,5	0,3	4 750	2 850	145	9 000
LR5001-2RS	30	30	12	12	15,5	0,3	5 100	3 100	161	8 500
LR5200-2Z	70	32	10	14	15,4	0,6	6 800	4 100	208	11 000
LR5200-X-2Z ¹⁾	70	32	10	14	15,4	0,6	6 800	4 100	208	11 000
LR5200-2RS	70	32	10	14	15,4	0,6	6 800	4 100	208	8 000
LR5002-2RS	50	35	15	13	20,4	0,3	6 500	4 150	217	7 000
LR5201-2Z	80	35	12	15,9	17,1	0,6	8 700	5 200	260	10 000
LR5201-X-2Z ¹⁾	80	35	12	15,9	17,1	0,6	8 700	5 200	260	10 000
LR5201-2RS	80	35	12	15,9	17,1	0,6	8 700	5 200	260	7 500
LR5003-2RS	70	40	17	14	21,6	0,3	7 800	5 300	270	6 000
LR5202-2Z	110	40	15	15,9	20	0,6	10 000	6 300	320	10 000
LR5202-X-2Z ¹⁾	110	40	15	15,9	20	0,6	10 000	6 300	320	10 000
LR5202-2RS	110	40	15	15,9	20	0,6	10 000	6 300	320	7 000

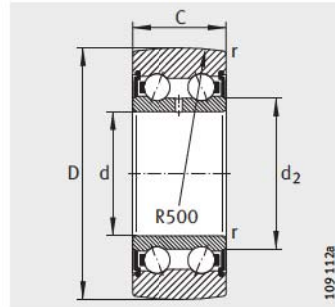
¹⁾ Track roller with cylindrical outside surface.

²⁾ Without lubrication hole.

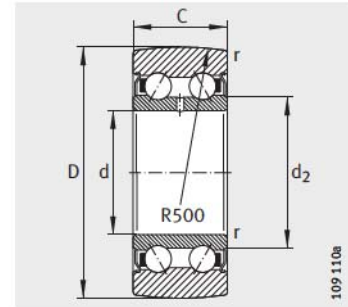


Yoke type track rollers

Double row
Sealed



LR50...-2RS, LR52...-2RS,
LR53...-2RS



LR52...-2Z, LR53...-2Z,
LR52...-X-2Z¹⁾

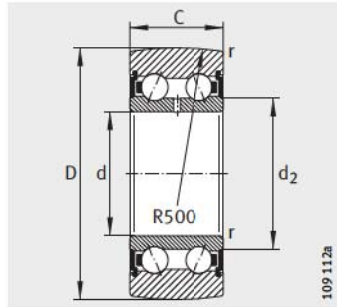
Dimension table (continued) - Dimensions in mm

Designation	Mass m ≈g	Dimensions					Basic load ratings		Fatigue limit load C _{urw} N	Speed n _{DG} min ⁻¹
		D	d	C	d ₂	r min.	dyn. C _{rw} N	stat. C _{Orw} N		
LR5004-2RS	120	47	20	16	25,2	0,6	11 700	7 700	400	5 500
LR5203-2Z	170	47	17	17,5	22,5	0,6	12 800	8 400	420	7 500
LR5203-X-2Z ¹⁾	170	47	17	17,5	22,5	0,6	12 800	8 400	420	7 500
LR5203-2RS	170	47	17	17,5	22,5	0,6	12 800	8 400	420	5 500
LR5005-2RS	150	52	25	16	29,8	0,6	11 800	8 200	440	4 700
LR5204-2Z	230	52	20	20,6	26,5	1	16 100	10 700	550	7 000
LR5204-X-2Z ¹⁾	230	52	20	20,6	26,5	1	16 100	10 700	550	7 000
LR5204-2RS	230	52	20	20,6	26,5	1	16 100	10 700	550	5 000
LR5303-2RS	210	52	17	22,2	23,5	1	17 500	11 300	560	4 700
LR5006-2RS	250	62	30	19	35,5	1	16 100	11 900	630	4 000
LR5205-2Z	340	62	25	20,6	30,3	1	18 800	13 200	670	6 500
LR5205-X-2Z ¹⁾	340	62	25	20,6	30,3	1	18 800	13 200	670	6 500
LR5205-2RS	340	62	25	20,6	30,3	1	18 800	13 200	670	4 500
LR5304-2Z	340	62	20	22,2	29	1,1	21 500	14 800	740	6 500
LR5304-2RS	340	62	20	22,2	29	1,1	21 500	14 800	740	4 500
LR5007-2RS	300	68	35	20	41,7	1	17 800	13 300	720	4 300

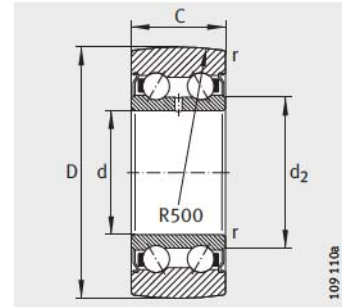
¹⁾ Track roller with cylindrical outside surface.

Yoke type track rollers

Double row
Sealed



LR52...-2RS, LR53...-2RS

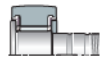


LR52...-2Z, LR53...-2Z,
LR52...-X-2Z¹⁾

Dimension table (continued) · Dimensions in mm

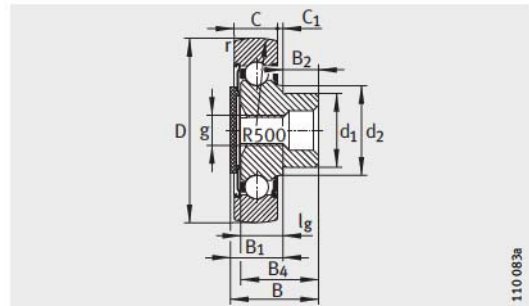
Designation	Mass m ≈g	Dimensions					Basic load ratings			Fatigue limit load C _{urw} N	Speed n _D g min ⁻¹
		D	d	C	d ₂	r min.	dyn. C _{rw} N	stat. C _{orw} N	F _{r per} N		
LR5206-2Z	510	72	30	23,8	37,4	1	25 000	18 000	–	930	5 000
LR5206-X-2Z ¹⁾	510	72	30	23,8	37,4	1	25 000	18 000	–	930	5 000
LR5206-2RS	510	72	30	23,8	37,4	1	25 000	18 000	–	930	3 500
LR5305-2Z	500	72	25	25,4	34,4	1,1	28 000	19 900	–	1 000	5 500
LR5305-2RS	500	72	25	25,4	34,4	1,1	28 000	19 900	–	1 000	3 900
LR5207-2Z	660	80	35	27	42,4	1,1	31 000	22 800	–	1 200	3 900
LR5207-X-2Z ¹⁾	660	80	35	27	42,4	1,1	31 000	22 800	–	1 200	3 900
LR5207-2RS	660	80	35	27	42,4	1,1	31 000	22 800	–	1 200	2 800
LR5306-2Z	670	80	30	30,2	41,4	1,1	35 500	25 500	–	1 330	4 300
LR5306-2RS	670	80	30	30,2	41,4	1,1	35 500	25 500	–	1 330	3 100
LR5208-2Z	750	85	40	30,2	48,4	1,1	35 000	26 000	21 100	1 360	3 500
LR5208-X-2Z ¹⁾	750	85	40	30,2	48,4	1,1	35 000	26 000	21 100	1 360	3 500
LR5208-2RS	750	85	40	30,2	48,4	1,1	35 000	26 000	21 100	1 360	2 500
LR5307-2Z	970	90	35	34,9	47,7	1,5	44 000	32 500	–	1 670	3 600
LR5307-2RS	970	90	35	34,9	47,7	1,5	44 000	32 500	–	1 670	2 500
LR5308-2Z	1 200	100	40	36,5	52,4	1,5	54 000	40 500	–	2 100	3 300
LR5308-2RS	1 200	100	40	36,5	52,4	1,5	54 000	40 500	–	2 100	2 300

¹⁾ Track roller with cylindrical outside surface.



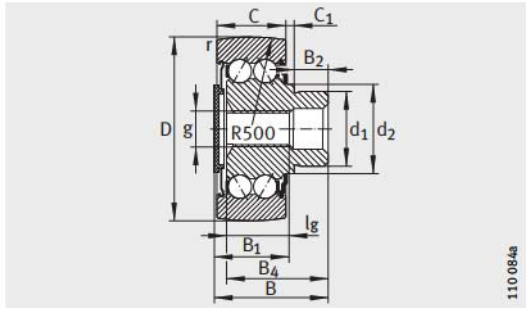
Stud type track rollers

Sealed



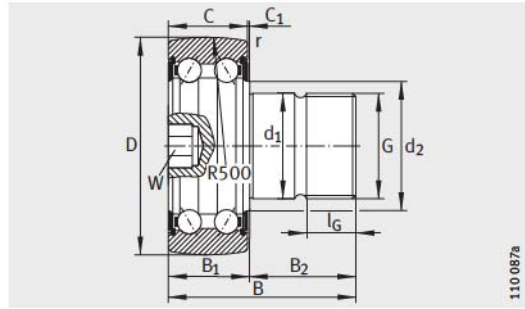
ZL2..-DRS

Dimension table · Dimensions in mm												
Designation	Mass m ≈g	Dimensions										
		D	d ₁	B	B ₁ max.	B ₂	B ₄	C	C ₁	d ₂	r min.	G
ZL5201-DRS	90	35	14	33,2	19,5	14	31	15,9	2,6	17,1	0,6	–
KR5201-2RS	120	35	12	49,2	17	32,5	–	15,9	0,8	17,1	0,6	M12X1,5
ZL202-DRS	80	40	16	23,8	14	10	21,5	11	2	20	0,6	–
ZL5202-DRS	120	40	16	36,2	20,5	16	34	15,9	3,5	20	0,6	–
KR5202-2RS	190	40	16	53,2	17	36,5	–	15,9	0,8	20	0,6	M16X1,5
ZL203-DRS	120	47	18	26,5	14,5	12	24,5	12	2	22,9	0,6	–
ZL5203-DRS	190	47	18	39,5	21,5	18	37,5	17,5	3,5	22,9	0,6	–
KR5203-2RS	290	47	18	58,8	18,5	40,5	–	17,5	0,8	22,9	0,6	M18X1,5
ZL204-DRS	170	52	20	30,7	17	14	28,5	14	2	26,8	1	–
ZL5204-DRS	250	52	20	45,3	25,5	20	43	20,6	4	26,8	1	–
KR5204-2RS	380	52	20	63,6	22,5	41,5	–	20,6	1,5	26,8	1	M20X1,5
ZL205-DRS	250	62	25	33,8	18	16	31	15	2	30,3	1	–
ZL5205-DRS	380	62	25	50,4	25,5	25	47,5	20,6	4	30,3	1	–
KR5205-2RS	580	62	24	70,9	21,5	49,5	–	20,6	0,8	30,3	1	M24X1,5
ZL5206-DRS	550	72	30	59	29	30	56,5	23,8	4,5	37,3	1	–
KR5206-2RS	800	72	24	74,1	25	49,5	–	23,8	0,8	37,3	1	M24X1,5
ZL5207-DRS	710	80	35	69,2	33,5	36	66,5	27	5,5	42,4	1,1	–
KR5207-2RS	1200	80	30	91	28	63	–	27	1	42,4	1,1	M30X1,5



1110 084a

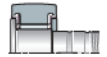
ZL52..-DRS



1110 087a

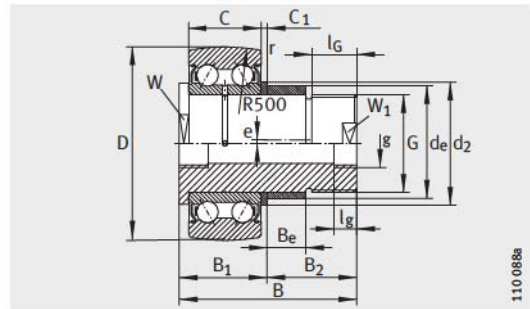
KR52...-2RS

				Tightening torque M_A Nm	Basic load ratings		Fatigue limit load C_{urw} N	Speed n_{DG} min ⁻¹
l_g	g	l_g	W		dyn. C_{rw} N	stat. C_{Orw} N		
-	M8	14	-	-	8 700	5 200	260	7 500
17	-	-	6	45	8 700	5 200	260	7 500
-	M8	15	-	-	6 600	3 350	170	8 500
-	M8	15	-	-	10 000	6 300	320	7 000
19	-	-	8	70	10 000	6 300	320	7 000
-	M8	16	-	-	8 500	4 450	223	6 500
-	M8	15	-	-	12 800	8 400	420	5 500
21	-	-	8	115	12 800	8 400	420	5 500
-	M10	18	-	-	10 600	5 700	295	6 000
-	M10	18	-	-	16 100	10 700	550	5 000
21	-	-	10	160	16 100	10 700	550	5 000
-	M10	19	-	-	12 500	7 100	360	5 500
-	M10	18	-	-	18 800	13 200	670	4 500
25	-	-	10	290	18 800	13 200	670	4 500
-	M16	20	-	-	25 000	18 000	930	3 500
25	-	-	10	290	25 000	18 000	930	3 500
-	M16	20	-	-	31 000	22 800	1 200	2 800
32	-	-	12	600	31 000	22 800	1 200	2 800



Stud type track rollers

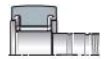
With eccentric collar
Sealed



ZLE52...-2Z

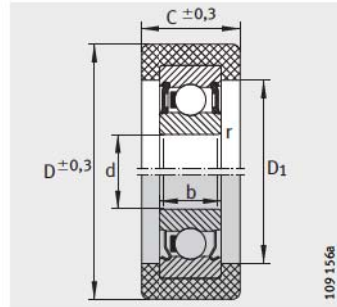
Dimension table · Dimensions in mm												
Designation	Mass m ≈ g	Dimensions										
		D	d _e	B	B ₁ max.	B ₂	C	C ₁	d ₂	r min.	W	W ₁
ZLE5201-2Z	250	35	18	65,5	20,5	45	15,9	2	25	0,6	15	9
ZLE5202-2Z	350	40	22	66,5	21,5	45	15,9	2,5	27	0,6	17	10
ZLE5204-2Z	460	52	24	76	26	50	20,6	2,5	30	1	22	17
ZLE5205-2Z	640	62	24	88	32	56	20,6	8	30	1	22	17
ZLE5207-2Z	1 300	80	35	99	35	64	27	3	45	1,1	40	27

						Tightening torque M_A Nm	Basic load ratings		Fatigue limit load C_{urw} N	Speed n_{DG} min^{-1}
e	B_e	g	l_g	G	l_G min.		dyn. C_{rw} N	stat. C_{Orw} N		
1	18	M6	6	M12X1,5	24	30	8 700	5 200	260	10 000
1	16	M8X1	8	M14	25	40	10 000	6 300	320	10 000
1	18	M8X1	8	M20X1,5	29	150	16 100	10 700	550	7 000
1	25	M8X1	8	M20X1,5	28	150	18 800	13 200	670	6 500
1,5	29	M8X1	8	M30X1,5	32	540	31 000	22 800	1 200	3 900

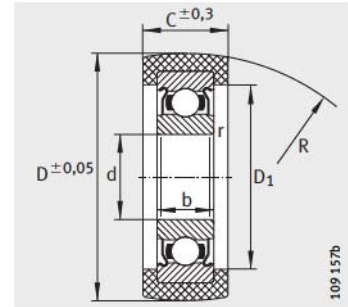


Track rollers

With plastic outer tyre
Sealed



KLRZ..-2RSR
KLRZ..-2Z



KLRU..-2Z

Dimension table · Dimensions in mm

Designation	Mass m ≈g	Dimensions							Basic load ratings of track roller ¹⁾ F _{r per} N	Deep groove ball bearing fitted	Basic load ratings of deep groove ball bearing	
		D	d	C	b	D ₁	R	r			dyn. C _r N	stat. C _{0r} N
KLRU08X28X11-2Z	16	27,5	8	11	7	20	500	0,3	250	608-2Z	3 200	1 250
KLRZ10X30X10-2Z	50	30	10	10	8	24	–	0,3	250	6000-2Z	4 600	1 970
KLRU12X35X12-2Z	30	34,8	12	12	8	26	300	0,3	340	6001-2Z	5 100	2 370
KLRZ12X41X16-2RSR	50	41	12	16	10	29,5	–	0,6	500	6201-2RSR	7 100	3 100
KLRU12X47X20-2Z	45	46,8	12	20	10	28,5	300	0,6	500	6201-2Z	7 100	3 100
KLRU15X47X20-2Z	50	46,8	15	20	11	31,5	300	0,6	500	6202-2Z	7 700	3 500

¹⁾ Valid for installation as track roller.

The values apply for operating temperatures up to max. +40 °C.