

Track rollers

- Yoke type track rollers
- Stud type track rollers
- Ball bearing track rollers

Product overview Yoke type track rollers

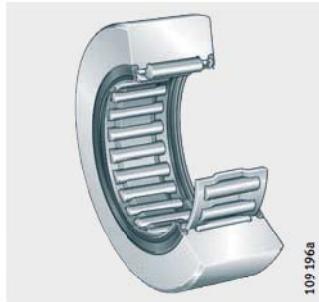
Without axial guidance
Without inner ring

RSTO



Lip seals

RNA22...-2RSR



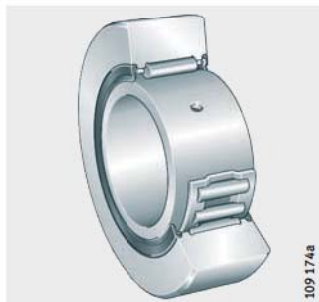
With inner ring

STO



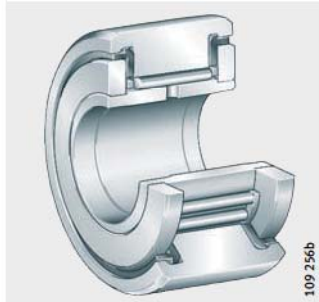
Lip seals

NA22...-2RSR

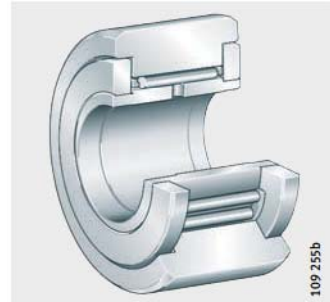


**With axial guidance
With cage**
Plastic axial plain washers
or gap seals

NATR..-PP

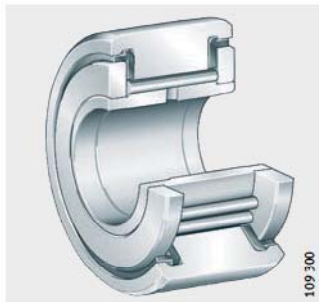


NATR

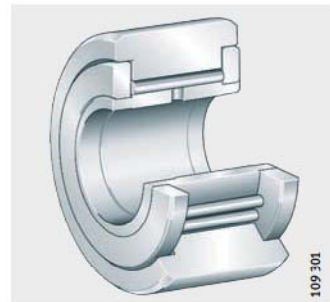


**Full complement
needle roller set**
Plastic axial plain washers
or gap seals

NATV..-PP

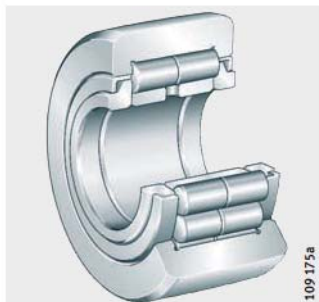


NATV



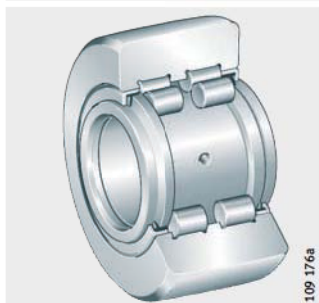
**Full complement
cylindrical roller set**
Labyrinth seals

NUTR



**Full complement
cylindrical roller set,
with central rib**
Protected lip seals or
sealing shields with lamellar ring

PWTR..-2RS



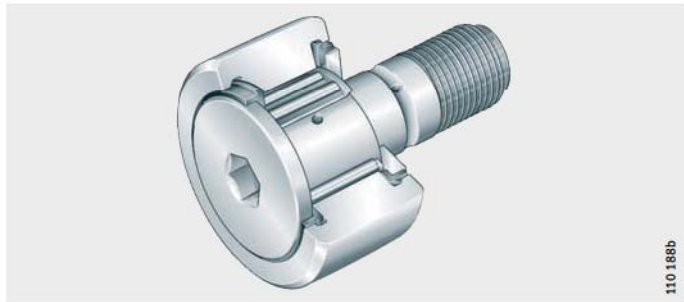
NNTR..-2ZL



Product overview Stud type track rollers

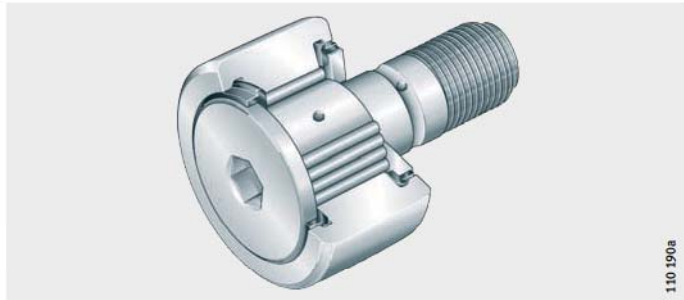
Without eccentric collar
With cage
Plastic axial plain washers
or gap seals

KR..-PP, KR



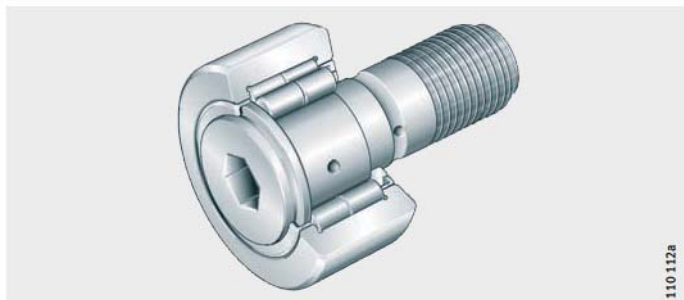
Full complement
needle roller set
Plastic axial plain washers

KRV..-PP



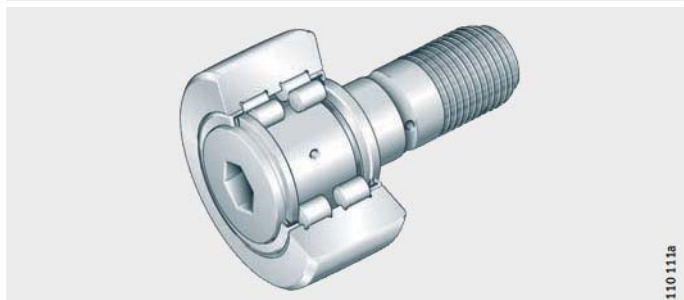
Full complement
cylindrical roller set
Labyrinth seals

NUKR



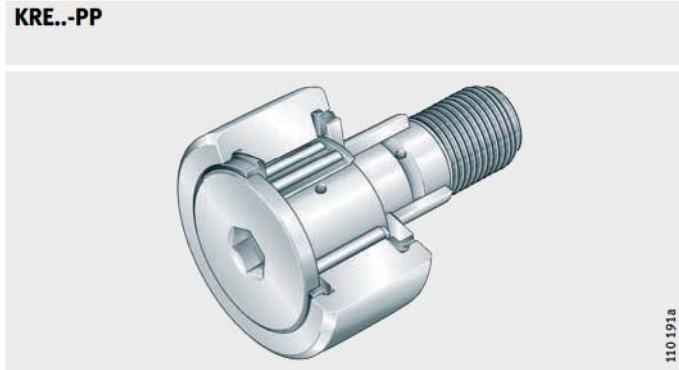
Full complement
cylindrical roller set,
with central rib
Protected lip seals

PWKR..-2RS



**With eccentric collar
With cage**
Plastic axial plain washers

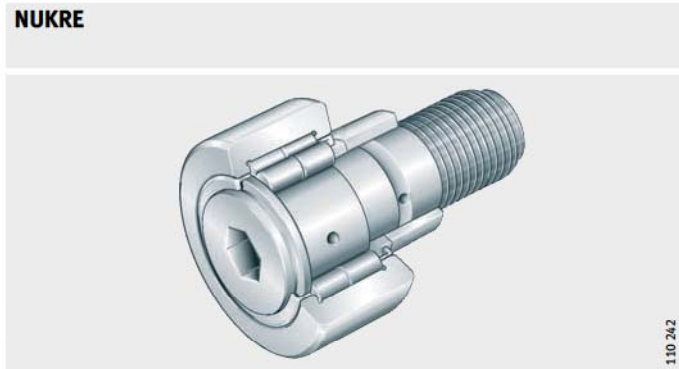
KRE..-PP



110 191a

**Full complement
cylindrical roller set**
Labyrinth seals

NUKRE

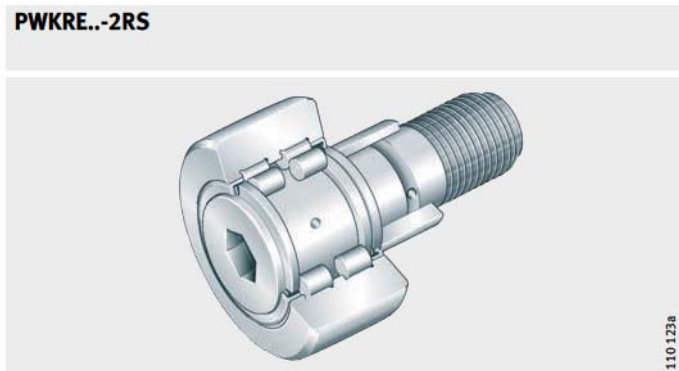


110 242



**Full complement
cylindrical roller set,
with central rib**
Protected lip seals

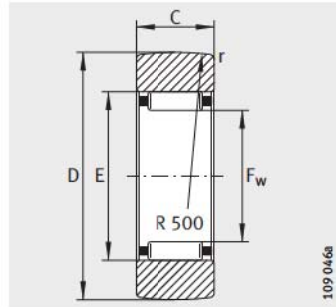
PWKRE..-2RS



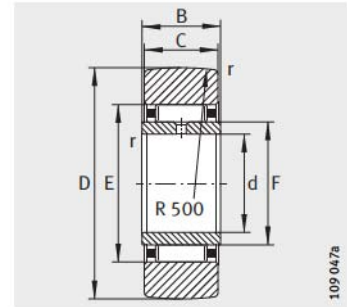
110 123a

Yoke type track rollers

Without axial guidance
Open



RSTO



STO

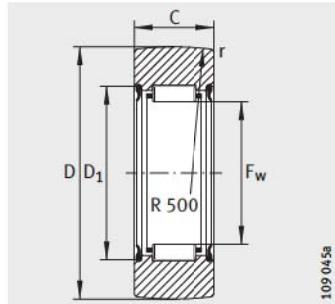
Dimension table · Dimensions in mm

Without inner ring Designation	Mass m ≈g	With inner ring Designation	Mass m ≈g	Dimensions							Basic load ratings		Fatigue limit load C_{urw} N	Speed n_{DG} min ⁻¹
				D	d	C	B	F ¹⁾ F _w	E	r min.	dyn. C_{rw} N	stat. C_{Orw} N		
RSTO5-TV	8,5	–	–	16	–	7,8	–	7	10	0,3	2 550	2 600	330	16 000
RSTO6-TV	12,5	STO6-TV	17	19	6	9,8	10	10	13	0,3	3 750	4 550	650	10 000
RSTO8-TV	21	STO8-TV	26	24	8	9,8	10	12	15	0,3	4 200	5 500	780	8 000
RSTO10	42	STO10	49	30	10	11,8	12	14	20	0,3	8 400	9 300	1 370	5 500
RSTO12	49	STO12	57	32	12	11,8	12	16	22	0,3	9 000	10 300	1 530	4 500
RSTO15	50	STO15	63	35	15	11,8	12	20	26	0,3	9 100	10 900	1 640	3 300
RSTO17	88	STO17	107	40	17	15,8	16	22	29	0,3	14 200	17 900	2 550	2 800
RSTO20	130	STO20	152	47	20	15,8	16	25	32	0,3	16 100	21 700	3 050	2 400
RSTO25	150	STO25	177	52	25	15,8	16	30	37	0,3	16 400	23 200	3 300	1 800
RSTO30	255	STO30	308	62	30	19,8	20	38	46	0,6	23 100	35 000	4 700	1 300
RSTO35	375	STO35	441	72	35	19,8	20	42	50	0,6	25 000	40 500	5 400	1 100
RSTO40	420	STO40	530	80	40	19,8	20	50	58	1	23 700	39 500	5 900	850
RSTO45	453	STO45	576	85	45	19,8	20	55	63	1	25 000	43 500	5 900	750
RSTO50	481	STO50	617	90	50	19,8	20	60	68	1	25 500	46 000	6 300	650

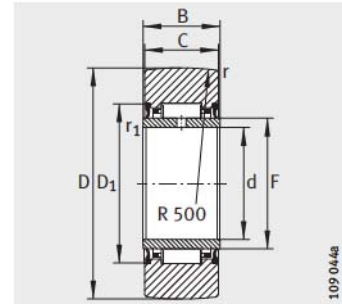
¹⁾ F = raceway diameter of the inner ring.
F_w = needle roller enveloping circle in tolerance zone F6.

Yoke type track rollers

Without axial guidance
Sealed



RNA22...-2RSR



NA22...-2RSR

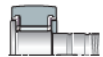
Dimension table - Dimensions in mm

Without inner ring Designation	Mass m ≈g	Dimensions					Basic load ratings		Fatigue limit load C_{urw} N	Speed n_{DG} min ⁻¹
		D	C	$F_w^{1)}$	D_1 min.	r min.	dyn. C_{rw} N	stat. C_{orw} N		
RNA22/6-2RSR	18	19	11,8	10	16	0,3	3 900	3 700	485	9 000
RNA22/8-2RSR	29	24	11,8	12	18	0,3	4 800	4 300	630	7 000
RNA2200-2RSR	52	30	13,8	14	20	0,6	7 000	6 900	1 090	5 500
RNA2201-2RSR	57	32	13,8	16	22	0,6	7 500	8 300	1 270	4 700
RNA2202-2RSR	60	35	13,8	20	26	0,6	7 600	9 800	1 370	3 400
RNA2203-2RSR	94	40	15,8	22	28	1	9 900	14 000	1 840	3 000
RNA2204-2RSR	152	47	17,8	25	33	1	14 000	19 100	2 650	2 300
RNA2205-2RSR	179	52	17,8	30	38	1	14 400	20 800	2 900	1 800
RNA2206-2RSR	284	62	19,8	35	43	1	17 100	26 000	3 550	1 400
RNA2207-2RSR	432	72	22,7	42	50	1,1	21 500	36 000	5 200	1 100
RNA2208-2RSR	530	80	22,7	48	57	1,1	26 000	41 000	5 300	850

Dimension table - Dimensions in mm

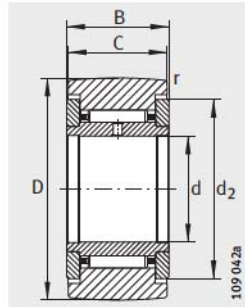
With inner ring Designation	Mass m ≈g	Dimensions									Basic load ratings		Fatigue limit load C_{urw} N	Speed n_{DG} min ⁻¹
		D	d	C	B	$F^1)$	D_1 min.	r min.	r_1 min.	dyn. C_{rw} N	stat. C_{orw} N			
NA22/6-2RSR	22	19	6	11,8	12	10	16	0,3	0,3	3 900	3 700	485	9 000	
NA22/8-2RSR	34	24	8	11,8	12	12	18	0,3	0,3	4 800	4 300	630	7 000	
NA2200-2RSR	60	30	10	13,8	14	14	20	0,6	0,3	7 000	6 900	1 090	5 500	
NA2201-2RSR	67	32	12	13,8	14	16	22	0,6	0,3	7 500	8 300	1 270	4 700	
NA2202-2RSR	75	35	15	13,8	14	20	26	0,6	0,3	7 600	9 800	1 370	3 400	
NA2203-2RSR	112	40	17	15,8	16	22	28	1	0,3	9 900	14 000	1 840	3 000	
NA2204-2RSR	177	47	20	17,8	18	25	33	1	0,3	14 000	19 100	2 650	2 300	
NA2205-2RSR	209	52	25	17,8	18	30	38	1	0,3	14 400	20 800	2 900	1 800	
NA2206-2RSR	324	62	30	19,8	20	35	43	1	0,3	17 100	26 000	3 550	1 400	
NA2207-2RSR	505	72	35	22,7	23	42	50	1,1	0,6	21 500	36 000	5 200	1 100	
NA2208-2RSR	628	80	40	22,7	23	48	57	1,1	0,6	26 000	41 000	5 300	850	
NA2210-2RSR	690	90	50	22,7	23	58	68	1,1	0,6	26 000	43 000	5 600	650	

¹⁾ F = raceway diameter of the inner ring.
 F_w = needle roller enveloping circle in tolerance zone F6.

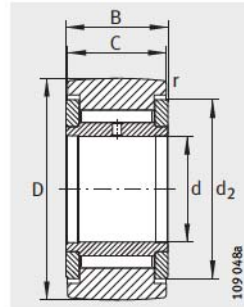


Yoke type track rollers

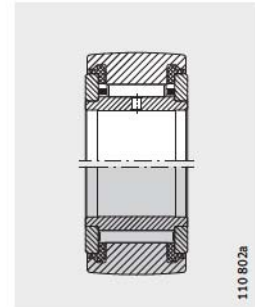
With axial guidance
Gap seals or axial plain washers



NATR
(R = 500 mm)



NATV
(R = 500 mm)



NATR...PP (optimised)
NATV...PP INA profile)

Dimension table · Dimensions in mm

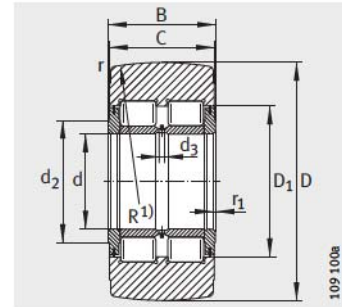
Designation ¹⁾	Mass m ≈g	Designation ²⁾	Mass m ≈g	Dimensions						Basic load ratings		Fatigue limit load C _{urw} N	Speed n _{DG} min ⁻¹
				D	d	B	C	d ₂	r min.	dyn. C _{rw} N	stat. C _{0rw} N		
NATR5	14	NATR5-PP	14	16	5	12	11	12,5	0,15	3 150	3 350	450	14 000
NATV5	15	NATV5-PP	15	16	5	12	11	12,5	0,15	4 900	6 600	950	3 800
NATR6	20	NATR6-PP	19	19	6	12	11	15	0,15	3 500	4 000	540	11 000
NATV6	21	NATV6-PP	21	19	6	12	11	15	0,15	5 400	8 000	1 170	3 100
NATR8	41	NATR8-PP	38	24	8	15	14	19	0,3	5 500	6 600	930	7 500
NATV8	42	NATV8-PP	41	24	8	15	14	19	0,3	7 800	11 600	1 590	2 500
NATR10	64	NATR10-PP	61	30	10	15	14	23	0,6	6 800	8 600	1 220	5 500
NATV10	65	NATV10-PP	64	30	10	15	14	23	0,6	9 500	14 900	2 050	2 100
NATR12	71	NATR12-PP	66	32	12	15	14	25	0,6	7 000	9 000	1 290	4 500
NATV12	72	NATV12-PP	69	32	12	15	14	25	0,6	9 700	15 700	2 170	1 800
NATR15	104	NATR15-PP	95	35	15	19	18	27,6	0,6	9 700	14 300	1 830	3 600
NATV15	109	NATV15-PP	101	35	15	19	18	27,6	0,6	12 600	23 100	3 200	1 600
NATR17	144	NATR17-PP	139	40	17	21	20	31,5	1	10 900	15 800	2 090	2 900
NATV17	152	NATV17-PP	147	40	17	21	20	31,5	1	14 700	26 500	3 500	1 400
NATR20	246	NATR20-PP	236	47	20	25	24	36,5	1	15 400	26 000	3 400	2 400
NATV20	254	NATV20-PP	245	47	20	25	24	36,5	1	20 300	42 000	5 900	1 300
NATR25	275	NATR25-PP	271	52	25	25	24	41,5	1	15 300	27 000	3 550	1 800
NATV25	285	NATV25-PP	281	52	25	25	24	41,5	1	20 200	44 000	6 200	1 000
NATR30	470	NATR30-PP	444	62	30	29	28	51	1	23 200	39 000	5 200	1 300
NATV30	481	NATV30-PP	468	62	30	29	28	51	1	30 000	62 000	8 800	850
-	-	NATR35-PP	547	72	35	29	28	58	1,1	24 800	44 500	5 900	1 000
-	-	NATV35-PP	630	72	35	29	28	58	1,1	32 500	71 000	10 100	750
-	-	NATR40-PP	795	80	40	32	30	66	1,1	32 000	58 000	8 300	850
-	-	NATV40-PP	832	80	40	32	30	66	1,1	40 000	88 000	13 000	650
-	-	NATR50-PP	867	90	50	32	30	76	1,1	31 000	59 000	8 400	650
-	-	NATV50-PP	969	90	50	32	30	76	1,1	39 000	92 000	13 600	550

1) Bearings with gap seals and radius of curvature of R = 500 mm.

2) Bearings with plastic axial plain washers and optimised INA profile.
Permissible operating temperature: -30 °C to +100 °C (continuous operation).

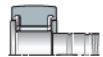
Yoke type track rollers

With axial guidance
Sealed



NNTR...-2ZL

Dimension table · Dimensions in mm											
Designation ¹⁾	Mass m ≈kg	Dimensions						Mounting dimensions			Number of lubrication holes
		D h10	d	B	C	r min.	r ₁ min.	d ₂	D ₁	d ₃	
NNTR50X130X65-2ZL	5,2	130	50	65	63	3	2	63	80	3	3
NNTR55X140X70-2ZL	6,4	140	55	70	68	3	2	73	91	4	3
NNTR60X150X75-2ZL	7,8	150	60	75	73	3	2	78	97	4	3
NNTR65X160X75-2ZL	8,8	160	65	75	73	3	2	82	103	5	3
NNTR70X180X85-2ZL	13	180	70	85	83	3	2	92	115	5	3
NNTR80X200X90-2ZL	16,8	200	80	90	88	4	2	102	127	5	3
NNTR90X220X100-2ZL	22,5	220	90	100	98	4	2,5	119	146	5	3
NNTR100X240X105-2ZL	28	240	100	105	103	4	2,5	132	160	6	6
NNTR110X260X115-2ZL	35,6	260	110	115	113	4	2,5	143	174	6	6
NNTR120X290X135-2ZL	52,8	290	120	135	133	4	3	155	191	8	6
NNTR130X310X146-2ZL	65,2	310	130	146	144	5	3	165	204	8	6

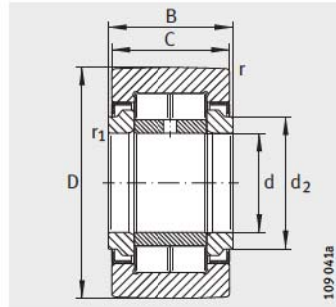


Dimension table (continued)						
Designation ¹⁾	Basic load ratings				Fatigue limit load C _{urw} N	Speed n _{DG} min ⁻¹
	dyn. C _{rw} N	stat. C _{orw} N	dyn. F _{r per} N	stat. F _{or per} N		
NNTR50X130X65-2ZL	193 000	265 000	265 000	265 000	37 000	1 100
NNTR55X140X70-2ZL	226 000	315 000	280 000	315 000	44 500	850
NNTR60X150X75-2ZL	255 000	365 000	330 000	365 000	53 000	800
NNTR65X160X75-2ZL	280 000	395 000	350 000	395 000	56 000	700
NNTR70X180X85-2ZL	355 000	510 000	465 000	510 000	75 000	600
NNTR80X200X90-2ZL	415 000	610 000	550 000	610 000	87 000	500
NNTR90X220X100-2ZL	500 000	750 000	600 000	750 000	104 000	400
NNTR100X240X105-2ZL	560 000	870 000	710 000	870 000	118 000	340
NNTR110X260X115-2ZL	670 000	1 050 000	820 000	1 050 000	143 000	300
NNTR120X290X135-2ZL	880 000	1 400 000	1 110 000	1 400 000	187 000	260
NNTR130X310X146-2ZL	1 010 000	1 630 000	1 280 000	1 630 000	216 000	240

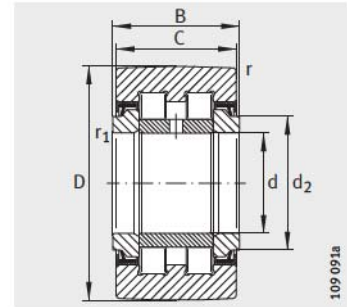
¹⁾ Radius of curvature R = 10 000 for NNTR50X130X65-2ZL to NNTR110X260X115-2ZL
R = 15 000 for NNTR120X290X135-2ZL and NNTR130X310X146-2ZL.

Yoke type track rollers

With axial guidance
Sealed



NUTR
(optimised INA profile)

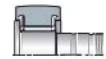


PWTR..-2RS
(optimised INA profile)

Dimension table - Dimensions in mm															
Designation	X-life	Mass m ≈g	Dimensions							Basic load ratings				Fatigue limit load C _{urw} N	Speed n _{DG} min ⁻¹
			D	d	B	C	d ₂	r	r ₁	dyn. C _{rw} N	stat. C _{orw} N	dyn. F _{r per} N	stat. F _{or per} N		
NUTR15	-	99	35	15	19	18	20	0,6	0,3	15 300	18 700	8 500	16 800	2 430	6 500
PWTR15-2RS	XL	99	35	15	19	18	20	0,6	0,3	12 600	14 600	10 700	14 600	1 760	6 000
NUTR17	-	147	40	17	21	20	22	1	0,5	18 700	24 900	13 000	24 900	3 150	5 500
PWTR17-2RS	XL	147	40	17	21	20	22	1	0,5	14 300	17 900	16 500	17 900	2 160	5 000
NUTR1542	-	158	42	15	19	18	20	0,6	0,3	18 300	24 300	24 300	24 300	3 100	6 500
PWTR1542-2RS	XL	158	42	15	19	18	20	0,6	0,3	14 700	16 200	16 200	16 200	2 140	6 000
NUTR1747	-	220	47	17	21	20	22	1	0,5	21 600	30 500	30 500	30 500	3 850	5 500
PWTR1747-2RS	XL	220	47	17	21	20	22	1	0,5	15 900	18 400	18 400	18 400	2 440	5 000
NUTR20	-	245	47	20	25	24	27	1	0,5	28 500	37 500	16 200	32 500	4 850	4 200
PWTR20-2RS	XL	245	47	20	25	24	27	1	0,5	24 500	30 500	20 700	30 500	3 750	3 800
NUTR2052	-	321	52	20	25	24	27	1	0,5	32 000	44 000	38 000	44 000	5 700	4 200
PWTR2052-2RS	XL	321	52	20	25	24	27	1	0,5	27 000	35 000	31 000	35 000	4 250	3 800
NUTR25	-	281	52	25	25	24	31	1	0,5	29 000	40 500	17 100	34 000	5 300	4 200
PWTR25-2RS	XL	281	52	25	25	24	31	1	0,5	25 000	33 000	21 800	33 000	4 100	3 800
NUTR2562	-	450	62	25	25	24	31	1	0,5	35 500	54 000	54 000	54 000	6 900	4 200
PWTR2562-2RS	XL	450	62	25	25	24	31	1	0,5	30 000	42 500	42 500	42 500	5 200	3 800
NUTR30	-	465	62	30	29	28	38	1	0,5	40 000	55 000	23 400	46 000	7 300	2 600
PWTR30-2RS	XL	465	62	30	29	28	38	1	0,5	35 000	45 500	29 000	45 500	5 800	2 200

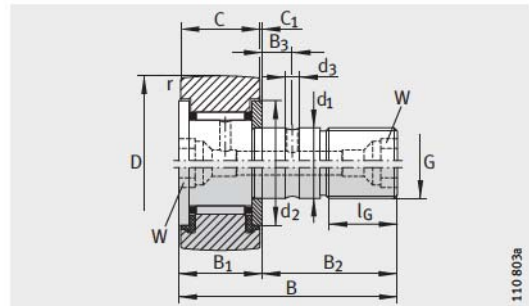
Dimension table (continued) - Dimensions in mm

Designation	X-life	Mass m ≈g	Dimensions							Basic load ratings				Fatigue limit load C _{urw} N	Speed n _{DG} min ⁻¹
			D	d	B	C	d ₂	r	r ₁	dyn. C _r w N	stat. C _{0r} w N	dyn. F _r per N	stat. F _{0r} per N		
NUTR3072	-	697	72	30	29	28	38	1	0,5	48 000	70 000	68 000	70 000	9 200	2 600
PWTR3072-2RS	XL	697	72	30	29	28	38	1	0,5	41 000	56 000	54 000	56 000	7 200	2 200
NUTR35	-	630	72	35	29	28	44	1,1	0,6	45 000	65 000	31 500	63 000	8 700	2 100
PWTR35-2RS	XL	630	72	35	29	28	44	1,1	0,6	38 500	54 000	39 000	54 000	6 900	1 800
NUTR3580	-	836	80	35	29	28	44	1,1	0,6	51 000	78 000	76 000	78 000	10 300	2 100
PWTR3580-2RS	XL	836	80	35	29	28	44	1,1	0,6	43 500	63 000	59 000	63 000	8 100	1 800
NUTR40	-	816	80	40	32	30	50,5	1,1	0,6	56 000	80 000	31 000	60 000	11 000	1 600
PWTR40-2RS	XL	816	80	40	32	30	50,5	1,1	0,6	45 000	61 000	39 500	61 000	7 900	1 500
NUTR45	-	883	85	45	32	30	55,2	1,1	0,6	56 000	83 000	32 000	62 000	11 500	1 400
PWTR45-2RS	XL	883	85	45	32	30	55,2	1,1	0,6	45 500	63 000	41 000	63 000	8 200	1 300
NUTR4090	-	1 129	90	40	32	30	50,5	1,1	0,6	66 000	101 000	84 000	101 000	13 900	1 600
PWTR4090-2RS	XL	1 129	90	40	32	30	50,5	1,1	0,6	52 000	75 000	67 000	75 000	9 600	1 500
NUTR50	-	950	90	50	32	30	59,8	1,1	0,6	56 000	86 000	32 500	63 000	11 900	1 300
PWTR50-2RS	XL	950	90	50	32	30	59,8	1,1	0,6	46 000	66 000	42 000	66 000	8 500	1 100
NUTR45100	-	1 396	100	45	32	30	55,2	1,1	0,6	72 000	115 000	106 000	115 000	15 800	1 400
PWTR45100-2RS	XL	1 396	100	45	32	30	55,2	1,1	0,6	56 000	85 000	85 000	85 000	10 900	1 300
NUTR50110	-	1 690	110	50	32	30	59,8	1,1	0,6	76 000	128 000	128 000	128 000	17 600	1 300
PWTR50110-2RS	XL	1 690	110	50	32	30	59,8	1,1	0,6	59 000	94 000	94 000	94 000	12 100	1 100



Needle roller stud type track rollers

With axial guidance
Open or sealed



from D = 22 mm KR (R = 500 mm)
KR..-PP (optimised INA profile)

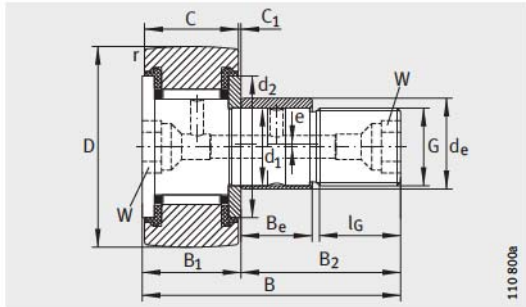
Dimension table · Dimensions in mm														
Designation	Mass m ≈g	With eccentric collar Designation	Mass m ≈g	Dimensions										
				D	d ₁ h7	B	B ₁ max.	B ₂	B ₃	C	C ₁	r min.	d ₂	d ₃
KR16 ³⁾	19	–	–	16	6	28	12,2	16	–	11	0,6	0,15	12,5	–
KR16-PP ³⁾	18	KRE16-PP ³⁾	20	16	6	28	12,2	16	–	11	0,6	0,15	12,5	–
KR16-SK-PP ⁴⁾	19	–	–	16	6	28	12,2	16	–	11	0,6	0,15	12,5	–
KRV16-PP ³⁾	19	–	–	16	6	28	12,2	16	–	11	0,6	0,15	12,5	–
KR19 ³⁾	29	–	–	19	8	32	12,2	20	–	11	0,6	0,15	15	–
KR19-PP ³⁾	29	KRE19-PP ³⁾	32	19	8	32	12,2	20	–	11	0,6	0,15	15	–
KR19-SK-PP ⁴⁾	29	–	–	19	8	32	12,2	20	–	11	0,6	0,15	15	–
KRV19-PP ³⁾	31	–	–	19	8	32	12,2	20	–	11	0,6	0,15	15	–
KR22	45	–	–	22	10	36	13,2	23	–	12	0,6	0,3	17,5	–
KR22-PP	43	KRE22-PP	47	22	10	36	13,2	23	–	12	0,6	0,3	17,5	–
KRV22-PP	45	–	–	22	10	36	13,2	23	–	12	0,6	0,3	17,5	–
KR26	59	–	–	26	10	36	13,2	23	–	12	0,6	0,3	17,5	–
KR26-PP	57	KRE26-PP	62	26	10	36	13,2	23	–	12	0,6	0,3	17,5	–
KRV26-PP	59	–	–	26	10	36	13,2	23	–	12	0,6	0,3	17,5	–
KR30	92	–	–	30	12	40	15,2	25	6	14	0,6	0,6	23	3
KR30-PP	88	KRE30-PP	93	30	12	40	15,2	25	6	14	0,6	0,6	23	3
KRV30-PP	91	–	–	30	12	40	15,2	25	6	14	0,6	0,6	23	3
KR32	103	–	–	32	12	40	15,2	25	6	14	0,6	0,6	23	3
KR32-PP	98	KRE32-PP	104	32	12	40	15,2	25	6	14	0,6	0,6	23	3
KRV32-PP	101	–	–	32	12	40	15,2	25	6	14	0,6	0,6	23	3

1) Drive fit lubrication nipples are supplied loose. Only these lubrication nipples should be used.

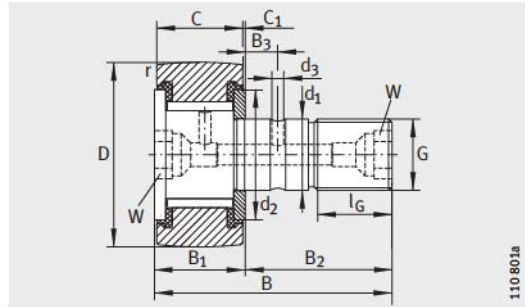
2) Nominal dimension for hexagonal socket.

3) Relubrication hole only on the flange-side end face with slot for countertensioning during fitting.

4) Hexagonal socket only on the flange-side end face. No relubrication facility.

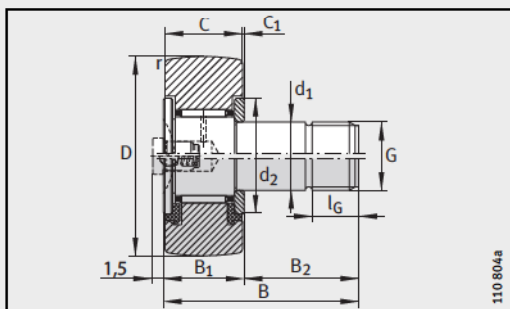
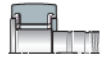


from D = 22 mm KRE..-PP (optimised INA profile)

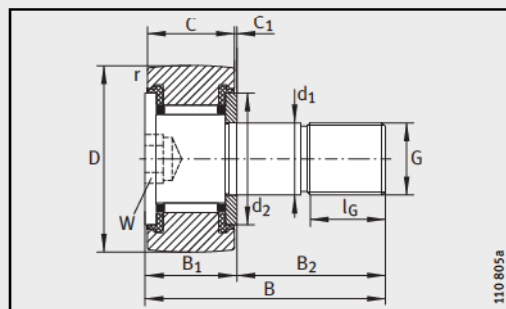


from D = 22 mm KRV..-PP (optimised INA profile)

G	l _G	W ²⁾	Eccentric collar			Drive fit lubrication nipple ¹⁾	Nut tightening torque M _A Nm	Basic load ratings		Fatigue limit load C _{urw} N	Speed n _{D G} min ⁻¹
			d _e h9	B _e	e			dyn. C _{r w} N	stat. C _{0r w} N		
M6(X1)	8	-	-	-	-	NIPA1	3	3 150	3 350	450	14 000
M6(X1)	8	-	9	7	0,5	NIPA1	3	3 150	3 350	450	14 000
M6(X1)	8	4	-	-	-	-	3	3 150	3 350	450	14 000
M6(X1)	8	-	-	-	-	NIPA1	3	4 900	6 600	950	3 800
M8(X1,25)	10	-	-	-	-	NIPA1	8	3 500	4 000	540	11 000
M8(X1,25)	10	-	11	9	0,5	NIPA1	8	3 500	4 000	540	11 000
M8(X1,25)	10	4	-	-	-	-	8	3 500	4 000	540	11 000
M8(X1,25)	10	-	-	-	-	NIPA1	8	5 400	8 000	1 170	3 100
M10X1	12	5	-	-	-	NIPA1X4,5	15	4 550	5 300	730	8 000
M10X1	12	5	13	10	0,5	NIPA1X4,5	15	4 550	5 300	730	8 000
M10X1	12	5	-	-	-	NIPA1X4,5	15	6 200	9 200	1 210	2 600
M10X1	12	5	-	-	-	NIPA1X4,5	15	5 100	6 400	840	8 000
M10X1	12	5	13	10	0,5	NIPA1X4,5	15	5 100	6 400	840	8 000
M10X1	12	5	-	-	-	NIPA1X4,5	15	7 300	11 500	1 500	2 600
M12X1,5	13	6	-	-	-	NIPA1X4,5	22	6 800	8 600	1 220	5 500
M12X1,5	13	6	15	11	0,5	NIPA1X4,5	22	6 800	8 600	1 220	5 500
M12X1,5	13	6	-	-	-	NIPA1X4,5	22	9 500	14 900	2 050	2 100
M12X1,5	13	6	-	-	-	NIPA1X4,5	22	7 100	9 200	1 290	5 500
M12X1,5	13	6	15	11	0,5	NIPA1X4,5	22	7 100	9 200	1 290	5 500
M12X1,5	13	6	-	-	-	NIPA1X4,5	22	10 000	16 100	2 200	2 100



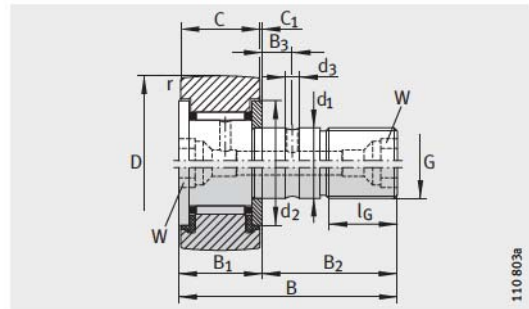
KR16, KR19
KR16-PP, KR19-PP (KRV16-PP, KRV19-PP)



KR16-SK-PP, KR19-SK-PP

Needle roller stud type track rollers

With axial guidance
Open or sealed



KR _____ (R = 500 mm)
KR...-PP (optimised INA profile)

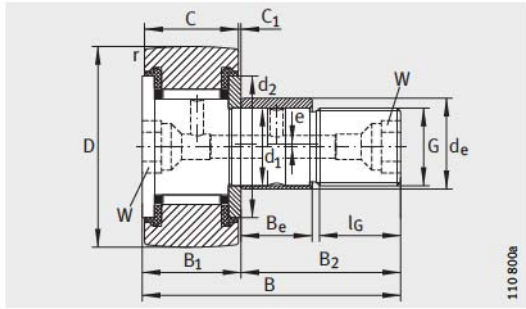
110 803a

Dimension table (continued) - Dimensions in mm														
Designation	Mass m ≈g	With eccentric collar Designation	Mass m ≈g	Dimensions										
				D	d ₁ h7	B	B ₁ max.	B ₂	B ₃	C	C ₁	r min.	d ₂	d ₃
KR35	173	-	-	35	16	52	19,6	32,5	8	18	0,8	0,6	27,6	3
KR35-PP	164	KRE35-PP	177	35	16	52	19,6	32,5	8	18	0,8	0,6	27,6	3
KRV35-PP	166	-	-	35	16	52	19,6	32,5	8	18	0,8	0,6	27,6	3
KR40	247	-	-	40	18	58	21,6	36,5	8	20	0,8	1	31,5	3
KR40-PP	239	KRE40-PP	255	40	18	58	21,6	36,5	8	20	0,8	1	31,5	3
KRV40-PP	247	-	-	40	18	58	21,6	36,5	8	20	0,8	1	31,5	3
KR47-PP	381	KRE47-PP	400	47	20	66	25,6	40,5	9	24	0,8	1	36,5	4
KRV47-PP	390	-	-	47	20	66	25,6	40,5	9	24	0,8	1	36,5	4
KR52-PP	454	KRE52-PP	473	52	20	66	25,6	40,5	9	24	0,8	1	36,5	4
KRV52-PP	463	-	-	52	20	66	25,6	40,5	9	24	0,8	1	36,5	4
KR62-PP	770	KRE62-PP	798	62	24	80	30,6	49,5	11	29	0,8	1	44	4
KRV62-PP	787	-	-	62	24	80	30,6	49,5	11	29	0,8	1	44	4
KR72-PP	1010	KRE72-PP	1038	72	24	80	30,6	49,5	11	29	0,8	1,1	44	4
KRV72-PP	1027	-	-	72	24	80	30,6	49,5	11	29	0,8	1,1	44	4
KR80-PP	1608	KRE80-PP	1665	80	30	100	37	63	15	35	1	1,1	53	4
KRV80-PP	1636	-	-	80	30	100	37	63	15	35	1	1,1	53	4
KR90-PP	1975	KRE90-PP	2032	90	30	100	37	63	15	35	1	1,1	53	4
KRV90-PP	2003	-	-	90	30	100	37	63	15	35	1	1,1	53	4

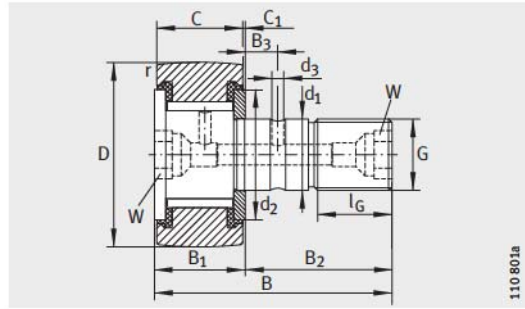
1) Drive fit lubrication nipples are supplied loose. Only these lubrication nipples should be used.

2) Nominal dimension for hexagonal socket.

Suitable central lubrication adapter for connection to a central lubrication system, see page 951.

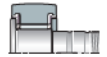


KRE...-PP (optimised INA profile)



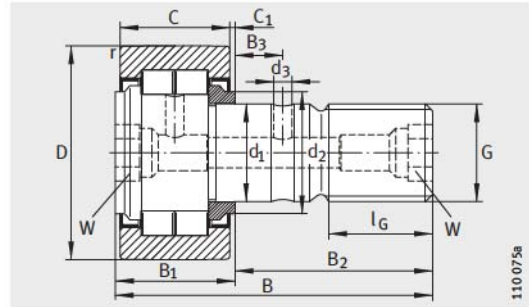
KRV...-PP (optimised INA profile)

G	l _G	W ²⁾	Eccentric collar			Drive fit lubrication nipple ¹⁾	Nut tightening torque M _A Nm	Basic load ratings		Fatigue limit load C _{urw} N	Speed n _{D G} min ⁻¹
			d _e h9	B _e	e			dyn. C _{r w} N	stat. C _{0r w} N		
M16X1,5	17	8	-	-	-	NIPA2X7,5	58	9 700	14 300	1 830	3 600
M16X1,5	17	8	20	14	1	NIPA2X7,5	58	9 700	14 300	1 830	3 600
M16X1,5	17	8	-	-	-	NIPA2X7,5	58	12 600	23 100	3 200	1 600
M18X1,5	19	8	-	-	-	NIPA2X7,5	87	10 900	15 800	2 090	2 900
M18X1,5	19	8	22	16	1	NIPA2X7,5	87	10 900	15 800	2 090	2 900
M18X1,5	19	8	-	-	-	NIPA2X7,5	87	14 700	26 500	3 500	1 400
M20X1,5	21	10	24	18	1	NIPA2X7,5	120	15 400	26 000	3 400	2 400
M20X1,5	21	10	-	-	-	NIPA2X7,5	120	20 300	42 000	5 900	1 300
M20X1,5	21	10	24	18	1	NIPA2X7,5	120	16 600	29 000	3 800	2 400
M20X1,5	21	10	-	-	-	NIPA2X7,5	120	22 300	48 000	6 700	1 300
M24X1,5	25	14	28	22	1	NIPA3X9,5	220	26 000	48 000	6 800	1 900
M24X1,5	25	14	-	-	-	NIPA3X9,5	220	33 500	75 000	11 200	1 100
M24X1,5	25	14	28	22	1	NIPA3X9,5	220	28 000	53 000	7 200	1 900
M24X1,5	25	14	-	-	-	NIPA3X9,5	220	36 500	85 000	12 600	1 100
M30X1,5	32	14	35	29	1,5	NIPA3X9,5	450	38 500	77 000	11 000	1 300
M30X1,5	32	14	-	-	-	NIPA3X9,5	450	48 500	117 000	17 400	850
M30X1,5	32	14	35	29	1,5	NIPA3X9,5	450	40 500	83 000	11 700	1 300
M30X1,5	32	14	-	-	-	NIPA3X9,5	450	52 000	129 000	19 000	850



Cylindrical roller stud type track rollers

With axial guidance



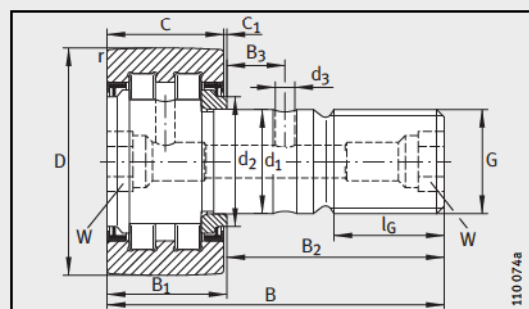
NUKR (optimised INA profile)

Dimension table · Dimensions in mm															
Without eccentric collar Designation	Mass m ≈g	With eccentric collar Designation	Mass m ≈g	X-life	Dimensions										
					D	d ₁ h7	B	B ₁ max.	B ₂	B ₃	C	C ₁	r min.	d ₂	d ₃
NUKR35	164	–	–	–	35	16	52	19,6	32,5	7,8	18	0,8	0,6	20	3
–	–	NUKRE35	177	–	35	16	52	22,6	29,5	–	18	3,8	0,6	27,6	–
PWKR35-2RS	164	–	–	XL	35	16	52	19,6	32,5	7,8	18	0,8	0,6	20	3
–	–	PWKRE35-2RS	177	XL	35	16	52	22,6	29,5	–	18	3,8	0,6	27,6	–
NUKR40	242	–	–	–	40	18	58	21,6	36,5	8	20	0,8	1	22	3
–	–	NUKRE40	258	–	40	18	58	24,6	33,5	–	20	3,8	1	30	–
PWKR40-2RS	242	–	–	XL	40	18	58	21,6	36,5	8	20	0,8	1	22	3
–	–	PWKRE40-2RS	258	XL	40	18	58	24,6	33,5	–	20	3,8	1	30	–
NUKR47	380	NUKRE47	400	–	47	20	66	25,6	40,5	9	24	0,8	1	27	4
PWKR47-2RS	380	PWKRE47-2RS	400	XL	47	20	66	25,6	40,5	9	24	0,8	1	27	4
NUKR52	450	NUKRE52	470	–	52	20	66	25,6	40,5	9	24	0,8	1	31	4
PWKR52-2RS	450	PWKRE52-2RS	470	XL	52	20	66	25,6	40,5	9	24	0,8	1	31	4
NUKR62	795	NUKRE62	824	–	62	24	80	30,6	49,5	11	28	1,3	1	38	4
PWKR62-2RS	795	PWKRE62-2RS	824	XL	62	24	80	30,6	49,5	11	28	1,3	1	38	4
NUKR72	1020	NUKRE72	1050	–	72	24	80	30,6	49,5	11	28	1,3	1,1	44	4
PWKR72-2RS	1020	PWKRE72-2RS	1050	XL	72	24	80	30,6	49,5	11	28	1,3	1,1	44	4
NUKR80	1600	NUKRE80	1670	–	80	30	100	37	63	15	35	1	1,1	47	4
PWKR80-2RS	1600	PWKRE80-2RS	1670	XL	80	30	100	37	63	15	35	1	1,1	47	4
NUKR90	1960	NUKRE90	2020	–	90	30	100	37	63	15	35	1	1,1	47	4
PWKR90-2RS	1960	PWKRE90-2RS	2020	XL	90	30	100	37	63	15	35	1	1,1	47	4

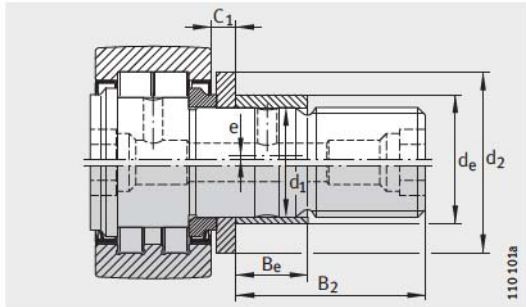
1) Drive fit lubrication nipples are supplied loose. Only these lubrication nipples should be used.

2) Nominal dimension for hexagonal socket.

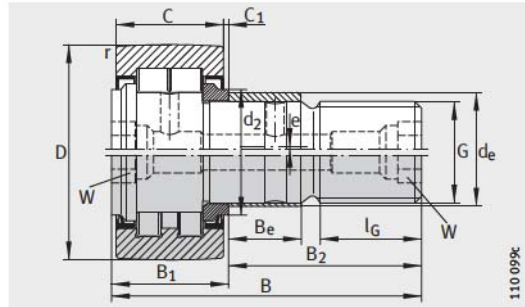
Suitable central lubrication adapter for connection to a central lubrication system, see page 951.



PWKR..-2RS (optimised INA profile)



NUKRE35/NUKRE40
PWKRE35-2RS/PWKRE40-2RS
(optimised INA profile)



NUKRE
PWKRE...-2RS
(optimised INA profile)

G	l _G	W ²⁾	Eccentric collar			Drive fit lubrication nipple ¹⁾	Nut tightening torque M _A Nm	Basic load ratings				Fatigue limit load C _{urw} N	Speed n _{DG} min ⁻¹
			d _e h9	B _e	e			dyn. C _{r,w} N	stat. C _{0r,w} N	dyn. F _r per N	stat. F _{0r} per N		
M16X1,5	17	8	-	-	-	NIPA2X7,5	58	15 300	18 700	8 500	16 800	2 430	6 500
M16X1,5	17	8	20	12	1	NIPA2X7,5	58	15 300	18 700	8 500	16 800	2 430	6 500
M16X1,5	17	8	-	-	-	NIPA2X7,5	58	12 600	14 600	10 700	14 600	1 760	6 000
M16X1,5	17	8	20	12	1	NIPA2X7,5	58	12 600	14 600	10 700	14 600	1 760	6 000
M18X1,5	19	8	-	-	-	NIPA2X7,5	87	18 700	24 900	13 000	24 900	3 150	5 500
M18X1,5	19	8	22	14	1	NIPA2X7,5	87	18 700	24 900	13 000	24 900	3 150	5 500
M18X1,5	19	8	-	-	-	NIPA2X7,5	87	14 300	17 900	16 500	17 900	2 160	5 000
M18X1,5	19	8	22	14	1	NIPA2X7,5	87	14 300	17 900	16 500	17 900	2 160	5 000
M20X1,5	21	10	24	18	1	NIPA2X7,5	120	28 500	37 500	16 200	32 500	4 850	4 200
M20X1,5	21	10	24	18	1	NIPA2X7,5	120	24 500	30 500	20 700	30 500	3 750	3 800
M20X1,5	21	10	24	18	1	NIPA2X7,5	120	29 000	40 500	17 100	34 000	5 300	4 200
M20X1,5	21	10	24	18	1	NIPA2X7,5	120	25 000	33 000	21 800	33 000	4 100	3 800
M24X1,5	25	14	28	22	1	NIPA3X9,5	220	40 000	55 000	23 400	46 000	7 300	2 600
M24X1,5	25	14	28	22	1	NIPA3X9,5	220	35 000	45 500	29 000	45 500	5 800	2 200
M24X1,5	25	14	28	22	1	NIPA3X9,5	220	45 000	65 000	31 500	63 000	8 700	2 600
M24X1,5	25	14	28	22	1	NIPA3X9,5	220	38 500	54 000	39 000	54 000	6 900	2 200
M30X1,5	32	14	35	29	1,5	NIPA3X9,5	450	69 000	104 000	47 500	95 000	14 100	1 800
M30X1,5	32	14	35	29	1,5	NIPA3X9,5	450	56 000	79 000	60 000	79 000	10 600	1 800
M30X1,5	32	14	35	29	1,5	NIPA3X9,5	450	78 000	123 000	76 000	123 000	16 700	1 800
M30X1,5	32	14	35	29	1,5	NIPA3X9,5	450	62 000	92 000	92 000	92 000	12 200	1 800

